

HYDRO-GRIP Type A and AI



Applications

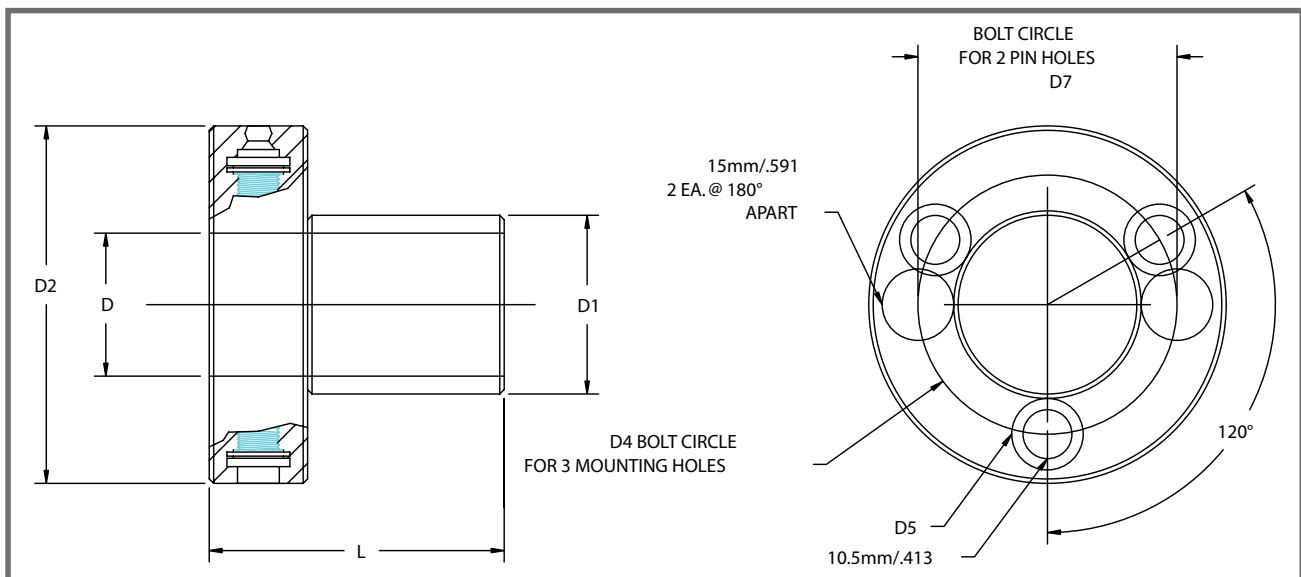
- Extremely accurate mounting system for use on non-threaded arbors

Advantages

- Increase feed rates by 30-50%
- Gives near perfect concentricity on the OD
- Excellent repeatability of the cutting circle ensures that all of the knives/wings cut effectively
- Reduces set up time because the cutting tool and sleeve remain as one unit No assembly required
- Smoother finishes for limited sanding

Technical Information

- Type A and AI is pressed into the cutting tool and retained by screws
- Type A sleeve is operated with a high pressure pump
- When pressurized: Inner sleeve expands towards the spindle
- Type AI sleeve is operated with a T-wrench



HYDRO-GRIP Type A and AI

Type A with inch bores

Part No.	Description	Capacity
MG112	A-1 1/4"/40-55***	35mm
MG113	A-1 13/16"/60-55	35mm
MG114	A-1 13/16"/65-55	35mm
MG115	A-2 1/8"/65-55	35mm

Type AI with inch bores

Part No.	Description	Capacity
MG130	AI-1 1/4"/40-55***	35mm
MG131	AI-1 1/2"/50-55	35mm
MG133	AI-1 13/16"/60-55	35mm
MG134	AI-2 1/8"/65-55	35mm

Type A with metric bores

Part No.	Description	Capacity
MG100	A-40/60-55	35mm
MG101	A-45/60-55*	35mm
MG105	A-45/60-75*	55mm
MG102	A-50/60-55**	35mm
MG106	A-50/60-75**	55mm
MG108	A-60/70-55	35mm
Special Size	A-60/70-75	35mm

Type AI with metric bores

Part No.	Description	Capacity
MG120	AI-40/50-55	35mm
MG121	AI-40/60-55	35mm
MG123	AI-50/60-55**	35mm
MG126	AI-50/60-75**	55mm
MG128	AI-50/65-75**	35mm

Special Sizes are non-standard sleeves

*) The A E45 sleeve has two carrier pegs, 8.5 x 5 mm.

**) The A E50 has two, threaded M5-holes for carrier pegs, on a 70 mm bolt circle diameter.

***) The A-1-1/4"/40 has two tool fastening holes.