

# Universal Insert Router Bits

## Applications

- Designed for use on C.N.C. router machines.
- Can also be used on stationary overhead routers.
- Use with mechanical feed operations.
- CNC router must have excellent hold downs to ensure the least possibility of part movement.
- To profile wide profiles and grooves, some rosettes that do not have a center button.
- Can also be used to cut raised panel sections and deep flat profiles.

## Technical Information

- Shank style cutter body design uses 2 non-turnable profiled carbide inserts.
- Available in a 2-wing (flute) design only.
- Requires the use of backing plates to support the profiled cutting region.

- Standard hook angle is 10° positive.
- Comes complete with cutter body, wedges, screws and allen wrench.
- Insert router bit is manufactured in right-hand rotation.
- Maximum RPM for 3/4" Shank = 10,000, 1" Shank = 12,000

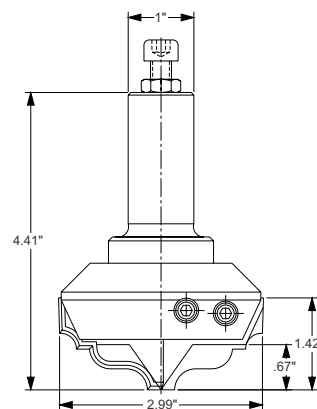
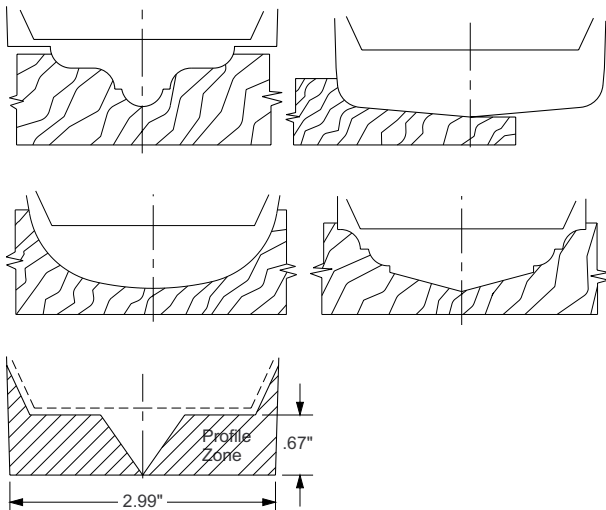
## Advantages

- Cutterhead is able to produce numerous profiles by simply changing the inserts and backing plates.
- Extended tool life over brazed tooling due to insert accuracy and superior carbide grades.
- Produces a constant cutting circle so setup and machine adjustments are reduced to a minimum.
- Lower tooling costs due to decreased down time required for tooling changes.

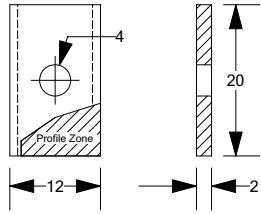
U.S. Part No.	Max. Cutting Width		Max. Profile Cutting Depth		Shank Size In.	Overall Length		Cutting Circle Dia.		Uses Insert No.	Backing Plate No.
	mm	in.	mm	in.		mm	in.	mm	in.		
NU138	76	2.99"	17	.67"	3/4"	112	4.41"	38	1.5"	6771/6774	NB123
NU144	76	2.99"	17	.67"	1"	112	4.41"	38	1.5"	6771/6774	NB123

## Spare Parts

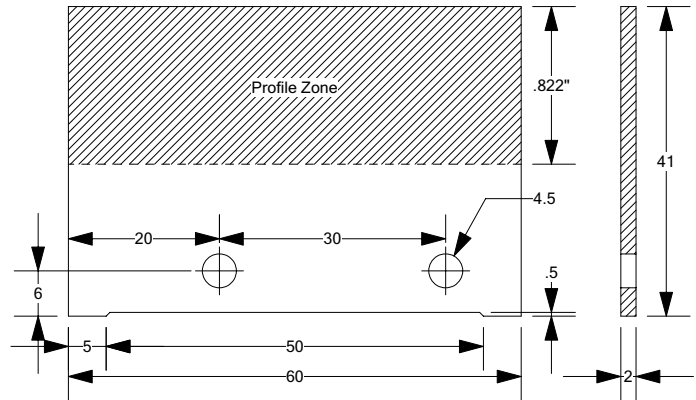
Part No.	Description
NP111	Clamping Wedge for 40mm inserts
NP117	Wedge Screw M8 x 12 for all Cutters
NP119	Allen Wrench SW4 for Screws
NP123	40mm x 36mm Backing Plate



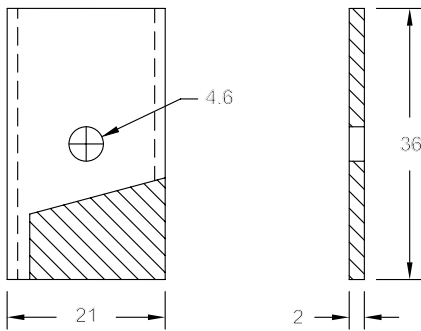
# Universal Inserts



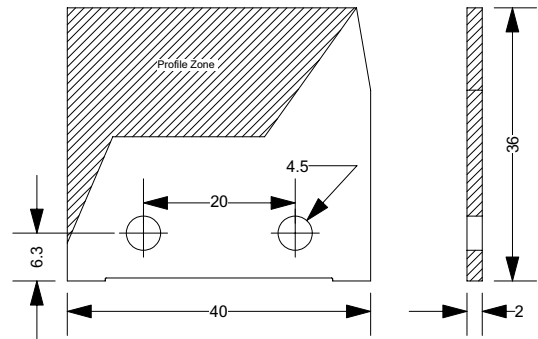
Part No.	Dim. WxHxT	Carbide Grade	Sold in Quantities
6778	20x12x1.5	GP	Ea.



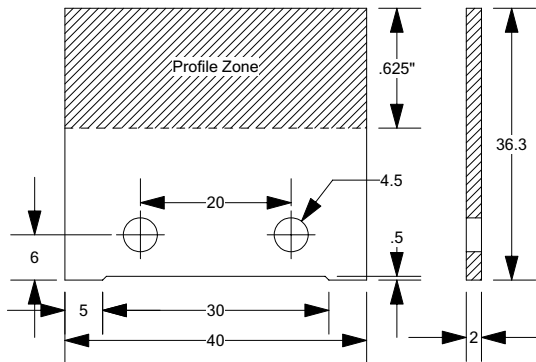
Part No.	Dim. WxHxT	Carbide Grade	Sold in Quantities
6660	60x42x2	GP	Ea.



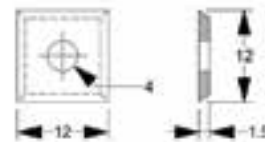
Part No.	Dim. WxHxT	Carbide Grade	Sold in Quantities
6781	36x21x2	GP	Ea.



Part No.	Dim. WxHxT	Carbide Grade	Sold in Quantities
6771	40x36x2	GP	Ea.
6774	40x36x2	GP	Ea.



Part No.	Dim. WxHxT	Carbide Grade	Sold in Quantities
6650	40x36.3x2	GP	Ea.



Part No.	Dim. WxHxT	Carbide Grade	Sold in Quantities
TJ156	12x12x1.5	GP	10