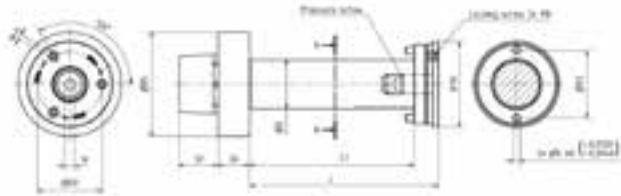


HYDRO-GRIP Types GEW2 and GE2



Technical Information

- The new GEW2 expands uniformly by pressurizing the system with an allen T-wrench, a grease gun is NOT required. The mechanism is protected from dust behind a sealed plug making the tool assembly quick and easy.

Type GEW2 with metric bores

Part No.	Description	Capacity
MG650	GEW2-30x55	55mm
MG651	GEW2-30x100	100mm
MG640	GEW2-40x55	55mm
MG641	GEW2-40x135	135mm
MG652	GEW2-40x170	170mm
MG642	GEW2-40x240	240mm
MG653	GEW2-50x55	55mm
MG654	GEW2-50x135	135mm
MG655	GEW2-50x170	170mm
MG644	Mounting Handle	