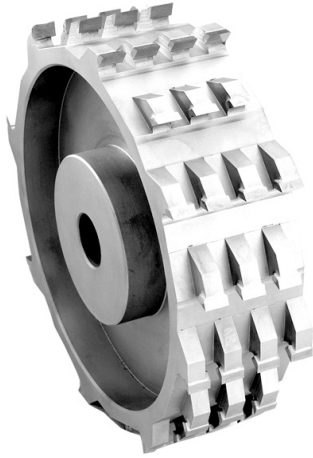


## Straight Refuse Hoggers



### Technical Information

- Staggered tooth design head
- CNC machined cutter bodies

## Applications

- Used on vertical spindles to size material (ie door sizing machines)

## Advantages

- No trim saw used with this system
- Trepanned for weight reduction
- Staggered tooth design for reduced cutting pressure and horsepower requirements
- Individual teeth for lower total maintenance cost

Head Diameter	Wings	Bore Size	Cutting Width
10"	8+8	1-1/4"	3"
12"	8+8	1-1/4"	3"
10"	8+8	1-1/4"	4"
12"	8+8	1-1/4"	4"

Note: Additional cutting widths, diameters, & bore sizes available upon request.

