

# HYDRO-GRIP Type C and CI



## Applications

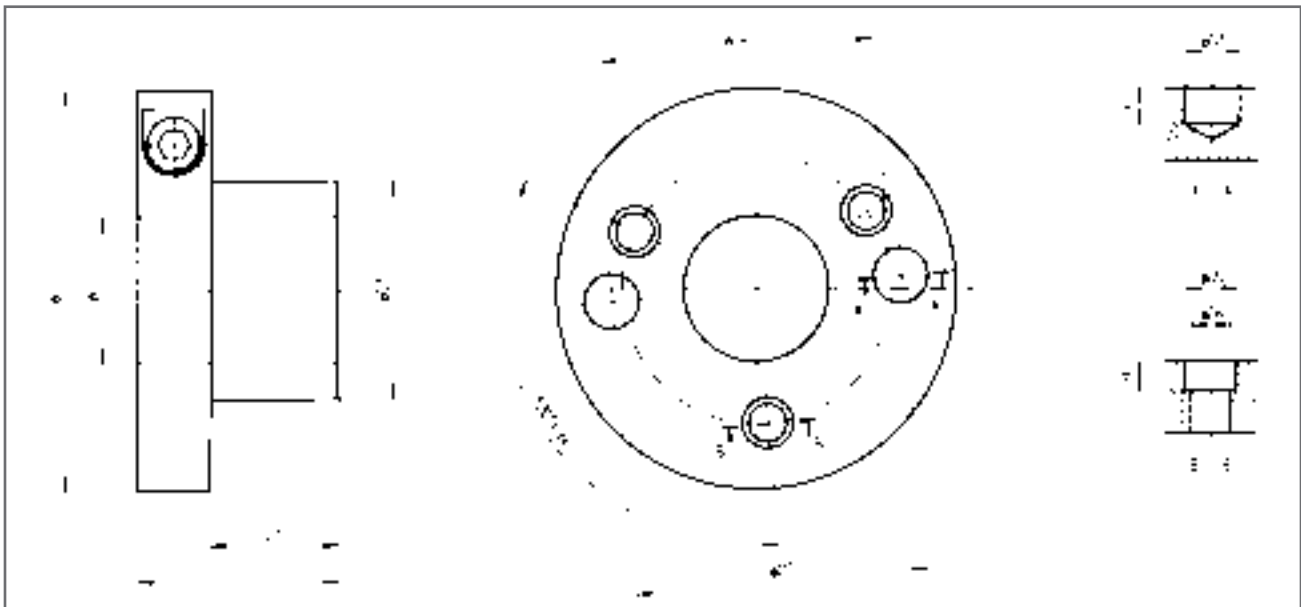
- Extremely accurate mounting system for use on non-threaded arbors

## Advantages

- Increase feed rates by 30-50%
- Gives near perfect concentricity on the OD
- Excellent repeatability of the cutting circle ensures that all of the knives/wings cut effectively
- Reduces set up time because the cutting tool and sleeve remain as one unit No assembly required
- Smoother finishes for limited sanding

## Technical Information

- Type C & CI sleeves are interchangeable between various cutting tools and retained by screws
- Type C sleeve is operated with a high pressure pump
- When pressurized: inner sleeve expands towards the spindle and the outer sleeve expands towards the tool
- Type CI sleeve is operated with a T-wrench



# HYDRO-GRIP Type C and CI

## Type C with inch bores

Part No.	Description	Capacity
MG328	C-1 1/2"/50-85	65mm
Special Size	C-1 1/2"/50-135	115mm
MG331	C-1 13/16"/60-75	55mm
MG332	C-1 13/16"/65-85	65mm
MG333	C-1 13/16"/65-135	115mm
Special Size	C-1 13/16"/65-185	165mm
Special Size	C-2 1/8"/65-85	65mm
Special Size	C-2 1/8"/65-135	115mm

## Type CI with inch bores

Part No.	Description	Capacity
Special Size	CI-1 1/2"/50-135	115mm
Special Size	CI-1 13/16"/60-115	95mm
Special Size	CI-2 1/8"/65-135	110mm

## Type C with metric bores

Part No.	Description	Capacity
Special Size	C-40/50-115	95mm
MG304	C-40/60-75	55mm
MG305	C-40/60-95	75mm
MG306	C-40/60-115	95mm
Special Size	C-40/60-140	120mm
MG308	C-40/60-165	145mm
Special Size	C-40/60-215	195mm
MG311	C-45/60-75*	55mm
Special Size	C-45/60-95*	75mm
Special Size	C-45/60-115*	95mm
Special Size	C-45/60-140*	120mm
MG318	C-50/60-75**	55mm
MG319	C-50/60-95**	75mm
MG320	C-50/60-115**	95mm
MG321	C-50/60-140**	120mm
MG322	C-50/60-190**	170mm
MG323	C-50/60-230**	210mm
MG326	C-60/70-233	213mm

## Type CI with metric bores

Part No.	Description	Capacity
MG340	CI-40/50-75	55mm
MG342	CI-40/60-75	55mm
MG343	CI-40/60-95	75mm
MG344	CI-40/60-115	95mm
MG345	••CI-40/60-140	115mm
Special Size	CI-45/60-95*	75mm
Special Size	••CI-45/60-140*	115mm
MG352	CI-50/60-75**	55mm
MG353	CI-50/60-95**	75mm
MG354	CI-50/60-115**	95mm
MG355	••CI-50/60-140**	115mm

Special Sizes are non-standard sleeves

\*) The A E45 sleeve has two carrier pegs, 8.5 x 5 mm.

\*\* ) The A E50 has two, threaded M5-holes for carrier pegs, on a 70 mm bolt circle diameter.

\*\*\* ) The A-1-1/4"/40 has two tool fastening holes.