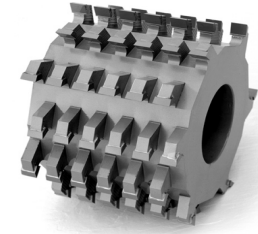


## Whisper Quiet I Moulder Heads

### Four Wings

The Whisper Quiet I four wing moulder heads are the equivalent to a four (4) knife head. It has 8 rows of staggered teeth. Please specify the hook angle when ordering. Standard hook angle is either 20° (soft wood) or 10° (hard wood).



Note: Sizes listed only represent our product line. Additional sizes available upon special quotation only.

Head Diameter	Teeth	Cutting Width Per Tooth	Cutting Width
5"	32	.500"	4"
5"	48	.500"	6"
5"	64	.500"	8"
5"	80	.500"	10"
5"	96	.500"	12"
5-1/2"	32	.500"	4"
5-1/2"	48	.500"	6"
5-1/2"	64	.500"	8"
5-1/2"	80	.500"	10"
5-1/2"	96	.500"	12"
6"	32	.500"	4"
6"	48	.500"	6"
6"	64	.500"	8"
6"	80	.500"	10"
6"	96	.500"	12"
6-1/2"	32	.500"	4"
6-1/2"	48	.500"	6"
6-1/2"	64	.500"	8"
6-1/2"	80	.500"	10"
6-1/2"	96	.500"	12"
8"	32	.500"	4"
8"	48	.500"	6"
8"	64	.500"	8"
8"	80	.500"	10"
8"	96	.500"	12"