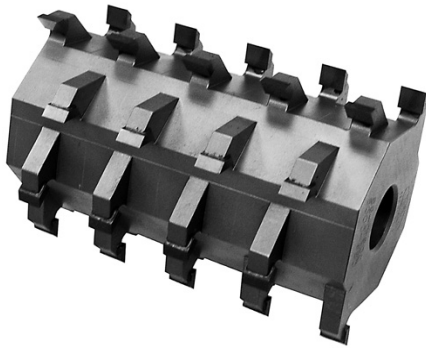


Spiracut Shaper Heads



Technical Information

- Stagger tooth design on one-piece, 2-wing head with replaces 2- wing straight knife heads
- 25 degree hook is standard
- Additional hook angles available upon request
- Specify straight or cone collet bore
- Bore sizes available in 1", 1-1/8" and 1-1/4"
- Other bores available upon request

Applications

- For hand and automatic feed shaper operations
- Excellent tool for rip and end grain cuts

Advantages

- CNC machined from solid steel for better accuracy
- Spiral tooth design for reduced cutting pressure, faster feed rates, and less horsepower required over straight knife heads
- Less noise generated
- Minimal tear out
- Individual teeth for lower maintenance cost

Part No.	Head Diameter	Teeth	Cutting Width
SSH 4-3	4"	18	3"
SSH 4-4	4"	24	4"
SSH 4-5	4"	30	5"
SSH 4-6	4"	36	6"