

Kitchen Cabinetry Tooling



NAPGLADU

Delivering Productivity

NAP Gladu: Your Partner in Cabinet Construction



▶ NAP Gladu provides a full-service partnership

By choosing NAP Gladu, you benefit from a comprehensive partnership focused on driving growth for your organization. Our knowledgeable representatives, work closely with you to develop tooling solutions built to improve the efficiency and performance of your entire production process.

Our full-service application assessment includes:

- *Evaluating your current machine set-ups, cutting processes, and cutting tools.*
- *Diagnosing any issues that could impact production, such as machine issues, tool handling and proper cutting parameters.*
- *Goal development to ensure you are getting the most out of your tools.*
- *Employee education on proper tool handling, safety, cutting tool set-up and troubleshooting.*

All the cabinetry tooling you need:

- *CNC router bits*
- *Panel saw blades*
- *Raised panel profiling*
- *Mortise & tenon cutting*
- *Finish & sanding heads*
- *Edge banding tools*



Carbide & Diamond Tools Built to the Highest Standard

▶ Collaborating to maximize production

Our combination of advanced engineering technology and dedicated customer service allows us to create tooling solutions that extend tool life and reduce your overall cost-per-cut, for all types of cabinet manufacturing processes.

Award winning tool design & engineering department



Our tooling experts will collaborate with you as needed to develop tools specifically designed to your unique application requirements

- **2 IWF Challengers Awards**
- *Over 30 tool design patents*
- *AutoCAD / SurfCAM software*

Advanced CNC technology ensures highest quality



We are equipped with the most advanced CNC machines available, and our highly-skilled machinists ensure our tools are built to the highest possible standards.

- *CNC diamond equipment*
- *Automated multiple 4 & 5 axis CNC turning and machining*
- *Machine verification software*

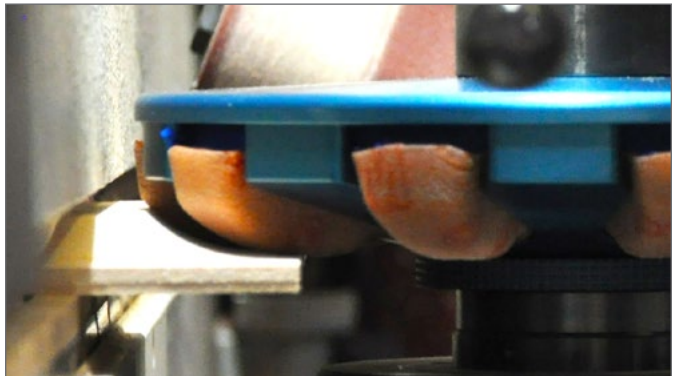
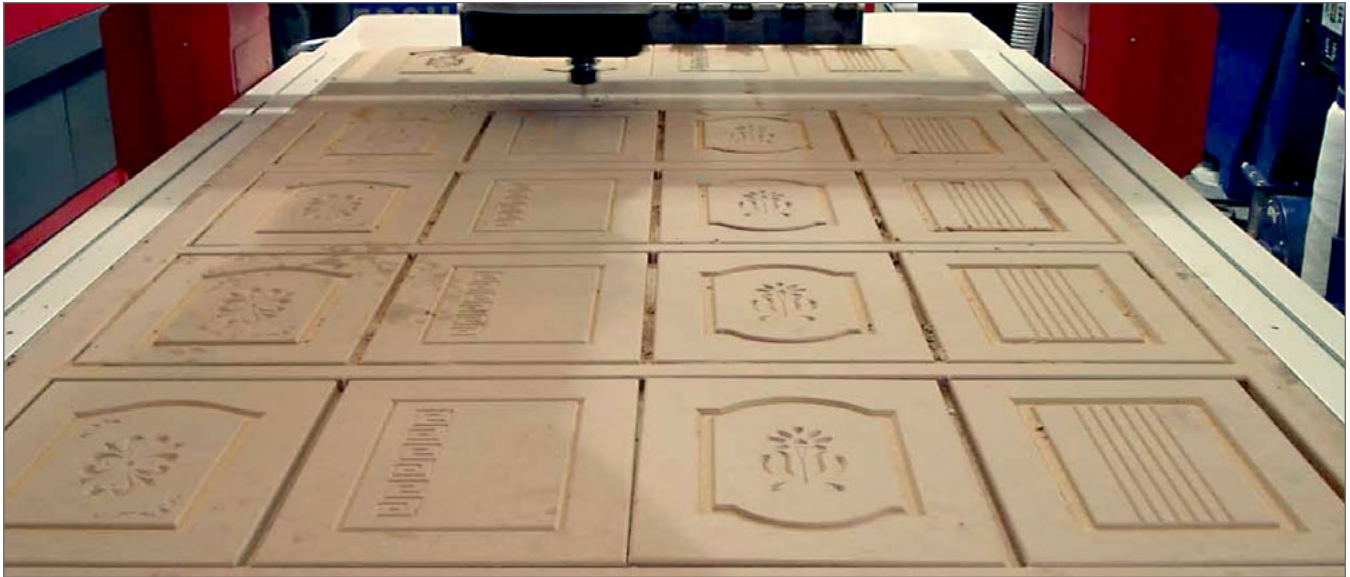
Rigorous quality assurance process



Each tool we produce undergoes a rigorous quality assurance process to ensure it meets the strictest quality standards.

- *ISO 9001-2008 certified*
- *Precision balancing equipment*
- *State-of-the-art measuring and verification technology*

Improve Production of Each Cabinet Component



► High-performance tools for any application

Whether you work in custom cabinetry, high-volume cabinet manufacturing, or nested-based cabinet production; we have the tools to improve the step-by-step production of each component.

NAP Gladu has a full line of profile router bits and cutter head, in diamond or carbide, to provide high-quality, decorative profiles with the cut consistency and tool life you need for the most demanding applications.



Tooling Solutions for Complete Cabinet Construction



Panel Saw Blades

No matter if you need to machine soft or hardwood, coated chipboard or MDF, we have saw blades designed for your specific application.



Router Bits & Shank Tools

Our shank tools are designed to provide extended tool life and improved cut quality to run longer in all types of natural and man-made wood materials.



AirPRO Dust Evacuation Nut

AirPRO removes dust "in the nut" as you cut, especially effective for nested cuts and slat wall. Its powerful up-draft that evacuates dust into your machines collection hood.



Next G Profiling Head

The Next G Series insert heads provide accurate self-positioning of your profiled inserts to eliminate positioning errors.



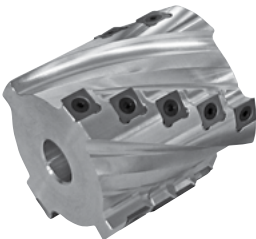
Raised Panel Insert Head

Our specially-designed raised panel insert head improves overall performance for optimal production of raised cabinet doors.



Sand-Free Tooling

Our Sand-Free Series tools reduce manual sanding by as much as 70%. Use our SF Series tools as a finishing pass for improved consistency and quality.



Spiramax Insert Head

A high-performance insert head for moulding, shaping and planing of all types of woodworking. Provides a scratch-free finish.



Vanish Insert Head

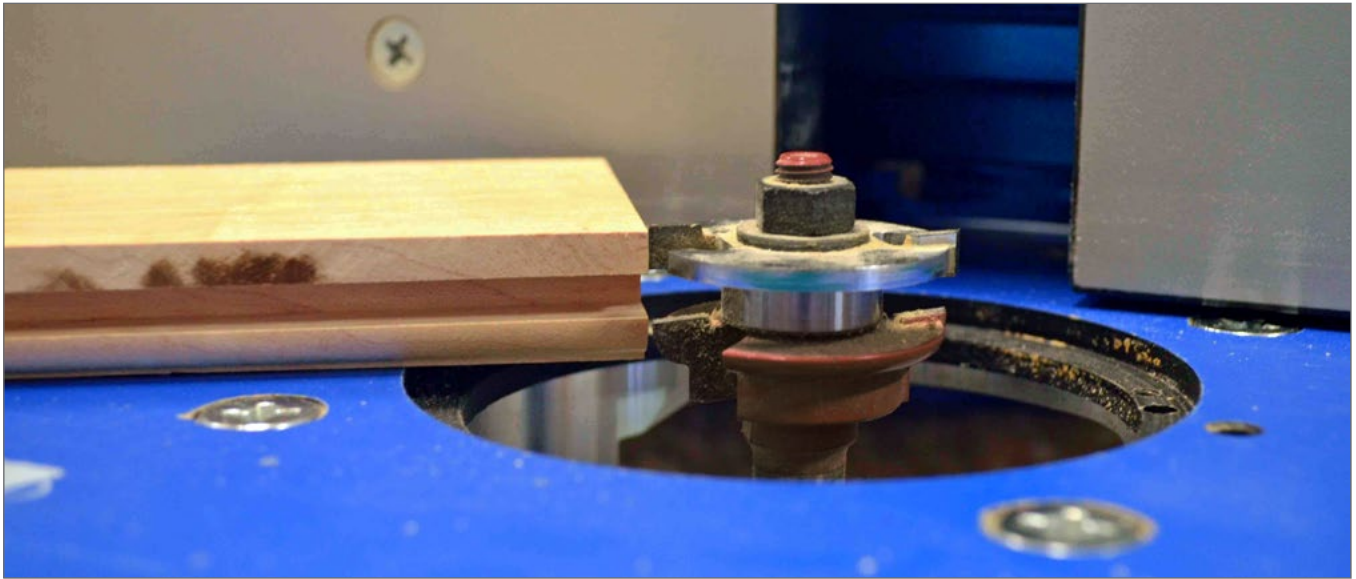
The Vanish insert head is an effective way to prevent unsightly chip marks on high quality finished surfaces and mouldings.



SuperSand Heads

The SuperSand profile sanding head features a lightweight design and an interchangeable profiled foam core, which can be custom made to fit your specified profile.

Specialized Tools for Cabinet Door Production



► Stile & rail profiling and grooving

Beautiful cabinetry relies on the seamless connectivity of each component. From stiles & rails to edge banding; we have tools built specifically for your required cabinet design.

Choose from our wide range of carbide or diamond tools for the profile and joint you desire.



Mortise & Tenon Cutter

Our specially designed mortise & tenon cutter heads for optimal production of cabinet doors.



Drawer Jointing & Edge Banding



Profiling & Jointing Tools

We have the tools for all types of detailing, cutting slots, creating moulding and notches for jointing and profiling:

- *Mortise & tenon bits*
- *Edge profiling shank tools*
- *Spiral mortising router bits*
- *Finger joint router bits*
- *Dovetail router bits*

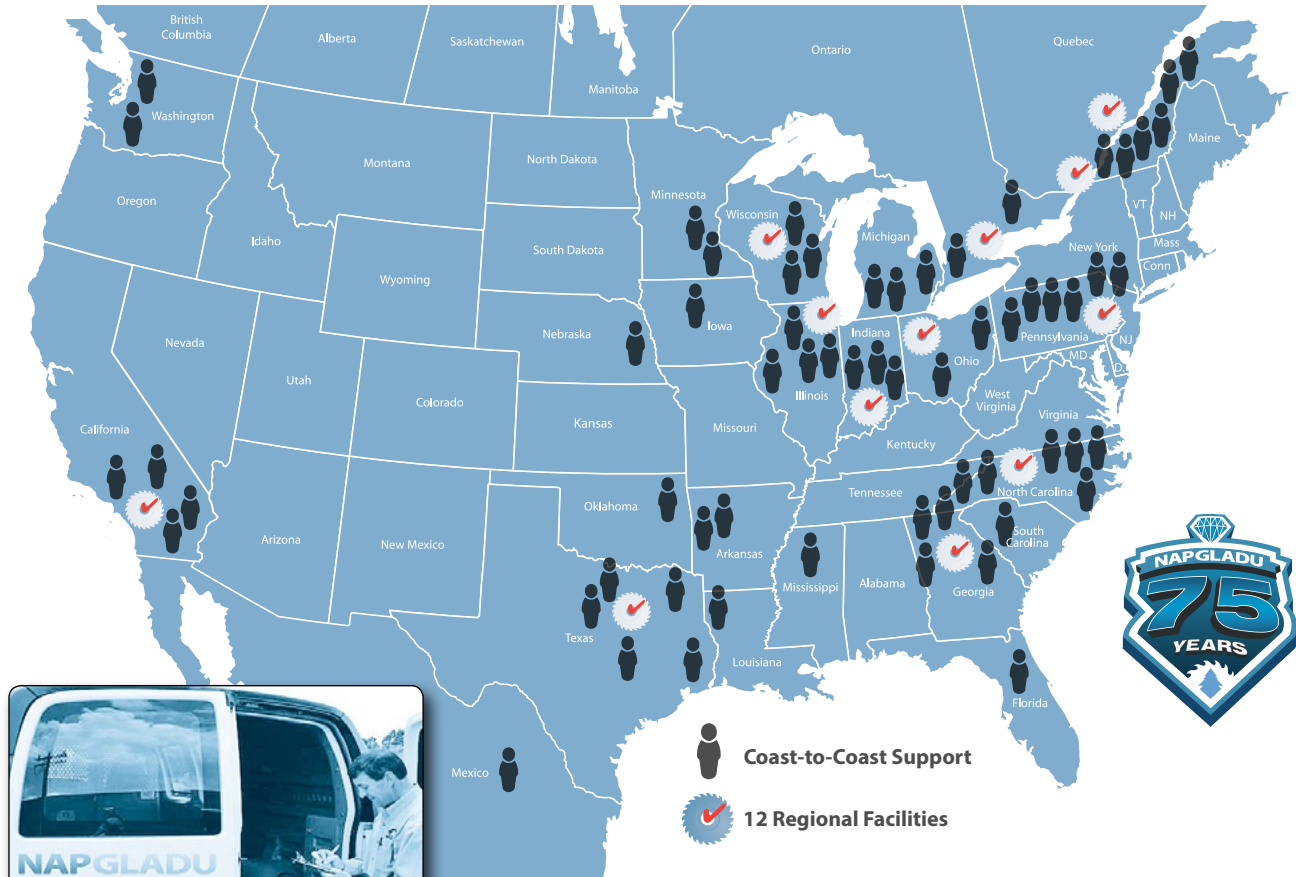


Edge Banding Tools

We offer a complete line of carbide & diamond edge band tooling to put the finishing touches on your cabinetry.



Delivering Productivity Where You Need It.



To reach your local representative call:

USA Headquarters | *Montreal, Canada* | *Toronto, Canada*
 (800) 634-8665 | (800) 363-9117 | (888) 251-2236

Your **NAP Gladu Rep** is an experienced and knowledgeable partner you can rely on for help solving tough tooling and production problems.



USA LOCATIONS

INDIANA-HEADQUARTERS
 1180 Wernsing Road
 Jasper, IN 47546
 Phone: (800) 634.8665
 Fax: (800) 457-7458

CALIFORNIA
 1941 S. Baker Avenue
 Ontario, CA 91761
 Phone: (909) 930-5990
 Fax: (909) 930-5996

GEORGIA
 1257 D. Kennestone Circle N.E.
 Marietta, GA 30066
 Phone: (770) 426-1100
 Fax: (770) 426-1994



For Tool Sharpening & Repair call the nearest location below

ILLINOIS
 7955 Burden Rd.
 Machesney Park, IL 61115
 Phone: (815) 877-7011
 Fax: (815) 877-7013

NORTH CAROLINA
 169 Crawford Road
 Statesville, NC 28625
 Phone: (704) 872-9571
 Fax: (704) 872-9575

OHIO
 411 Geneva Avenue
 Tallmadge, OH 44278
 Phone: (330) 633-0599
 Fax: (330) 633-0791

PENNSYLVANIA
 11 Keystone Drive
 LV Business Park
 Lebanon, PA 17042
 Phone: (717) 273-9301
 Fax: (717) 274-3764

TEXAS
 4647 Leston Avenue #603
 Dallas, TX 75247
 Phone: (214) 637-4849
 Fax: (214) 637-5012

WISCONSIN
 3211 Industrial Street
 Wisconsin Rapids, WI 54495
 Phone: (888) 221-8665
 Fax: (715) 424-1920



CANADA LOCATIONS

MONTREAL
 2115 Saint-Cesaire Street
 Marieville, QC J3M 1E5
 Phone: (800) 363-9117
 Fax: (450) 460-2655

TORONTO
 222 Evans Ave.
 Toronto, ON M8Z 1J8
 Phone: (888) 251-2236
 Fax: (416) 251-7268

QUEBEC
 3020 95th Street
 Saint - Georges, QC G6A 1E2
 Phone: (888) 270-2248
 Fax: (418) 228-7503